

## iPad Case

Protect your iPad with our range of zip up cases. All printed by dye sublimation in the UK for fast delivery. The dye sublimation print process gives stunning full colour results to the edge of the product.



## Key Product Information

Product Code:	16100CAS
Commodity Code:	4202929890
MOQ:	25
Size:	See Artwork Requirements
Available Thickness:	15mm
Branding Area:	Within dimensions
Branding Method:	Dye Sublimation
Material:	Polyester
Made In:	UK
PDF Proof:	24-48 Hours
Express Service	Not Available
Available:	
Printed Proof Leadtime:	3 Working days
Leadtime:	10 Working days from proof approval
Colour:	White with black trim
Weight:	123g

## Packaging and Other Information

No Per Carton:	100
Packaging Details:	480 x 350 x 390mm
Carton Weight:	23Kg
Standard Packaging:	Bulk Packed
Alternative Packaging:	N/A

## Recommendations and Limitations

As this product is assembled prior to decoration, we are unable to guarantee decoration right upto the stitching and some white areas may be visible. Please see artwork guidelines for other recommendations.

Printed to one side only, the other side remains black.

Ideal For: Holiday, Business Travel

## iPad Case

Sizes available: 280 x 220mm

**Print Area and Bleed:** Please add 10mm bleed all the way around the outside of the design. Avoid placing text within a minimum of 10mm of the edge of the case. Note that the radius corners on this product are quite large and this should be taken into account when positioning the text on the design.

**If reversing text out of a solid background:** Dye sub print gives more problems with bleed so avoid fine typefaces. Set text in bold. Minimum point size 12.

**Tints:** Minimum of 10% difference between tint values to give a visual contrast. Printable range of 20% to 80%.

**Scans:** Low-resolution scans produce poor print. 600 dpi minimum for best results. Ensure scans have no colour cast. The print process will exaggerate the slightest contamination.

### Special Considerations:

It is important to note that the fabric top of the panels of the case may vary in terms of both the weave and colour of the textile. These variations may have an effect on the reproduction of your artwork, making it difficult to match previous productions or any proof sample that may have been supplied. Additionally, the rubber base may also vary in appearance and colour.

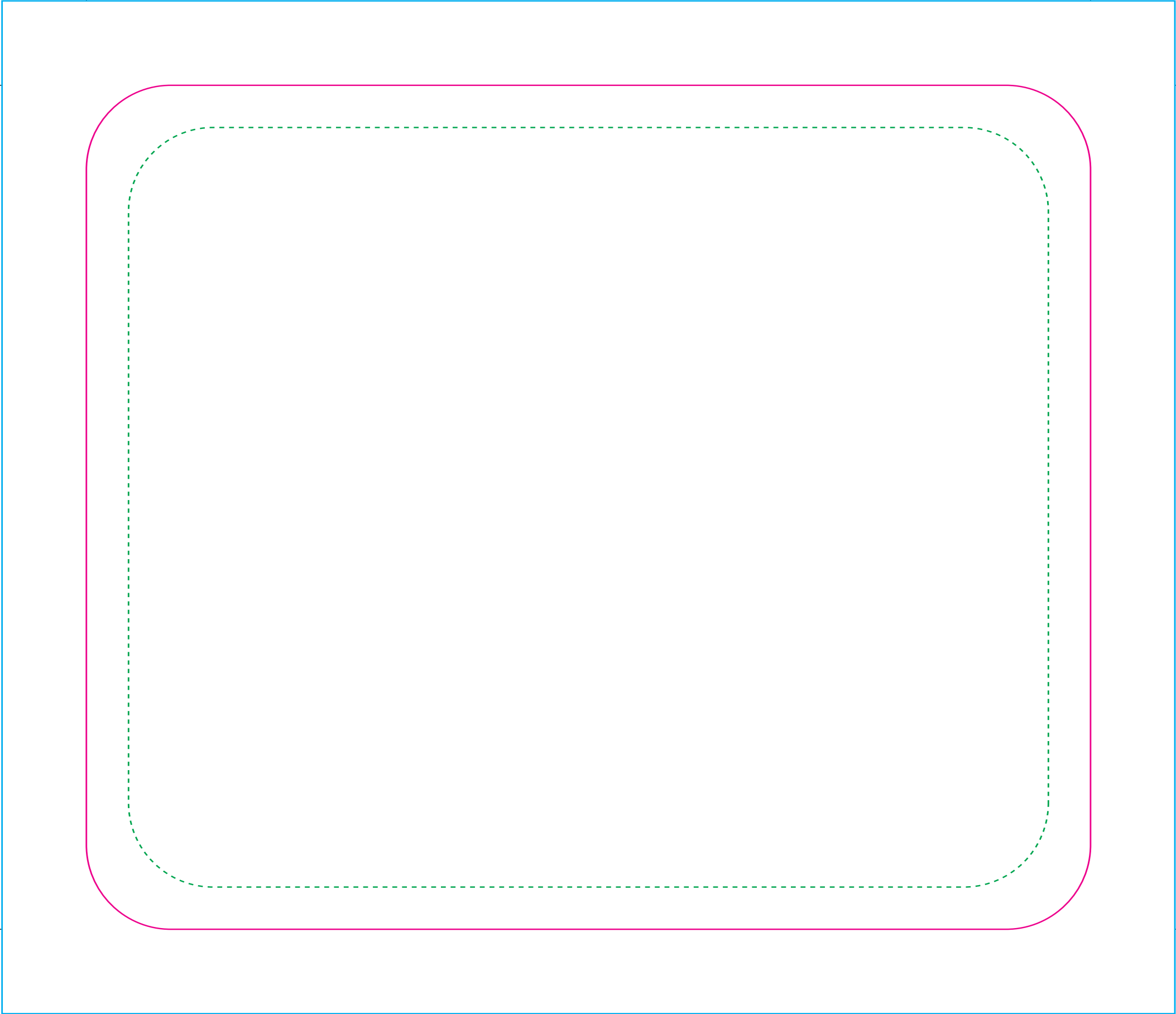
### Colour Matching:

There is a colour shift when the inks are sublimated making it impractical to match some colours exactly. If it is critical to match accurately a particular colour in your design, it should be separated out as a special and indicated as such on the artwork. Please note that the range of base colours available for dye sublimation printing are limited and some colour matches are not possible.

**QR Codes -** Please note that the print process and substrates used in the production of this item may not always allow QR codes, if present on your artwork, to function correctly. When approving your proof, you are accepting that this may be the case and as such accept full liability for any malfunction of the QR code.

See the following page(s) for the artwork templates for this product.

All information correct at time of publication. Whilst we endeavour to maintain the accuracy of this document, details may change without notice.



**iPad 2/3 Case**

Tool No:	n/a
Shape:	Rectangle
Printable Area -	
Width:	238mm
Height:	200mm
Artwork with Bleed -	
Width:	278mm
Height:	240mm

- - - Please keep all live matter such as text, logos and other important images within this area.

Due to the production process of this product, we strongly advise against having borders on the artwork.